

**STUDENT RESOURCES**

# UNDERSTANDING DIVERSE DEMOGRAPHICS

## THE BIG QUESTION

How can census participation increase?

## BACKGROUND

In 2020, the United States counted the nation's population, as outlined by the Constitution. Results from the Census, which takes place every ten years, allow citizens, governments, and businesses to gain valuable information on the changing demographics of our diverse country. Participation in the Census is vital since results not only help us understand our country, but also inform how the government allocates resources across communities. After analyzing data about population density, diversity, and voting participation, you are now going to ask "How can Census participation increase?" and collect your own data to help understand the question.

## THE STEPS

Review the information and data starting on page 5 of this document. Now that you have some background information on the Census and the impact it has on our country and your community, you are now going to collect your own data to help answer the question "How can Census participation increase?"

## STEP 1

After considering some of the important issues related to the Census, you will work independently or with a small group to create a short survey to capture your own data. The goal here is to gather useful information that will help you better understand diverse experiences and recognize trends or shared experiences. To help create, administer, and collect useful data from your survey, you may choose to refer to the "Collecting Data: Tips and Tricks" handout in this document.

## STEP 2

After you have created your survey, consider how you will administer your survey and who might take your survey. To get the most useful information and results that will help answer your big question, ensure that your survey has diverse representation in responses and that your survey is easy to complete.

## STEP 3

After you administer the survey, consider how you will analyze your data. As you review the results, consider a few of the questions below:

- What did you learn?
- How could it be visualized for others to understand? Would displaying the data in charts and graphs help you to analyze the data and see trends?
- Does your data reflect a wide range of people? Does your sample represent the overall group of people (the population) you wanted to study?
- What other questions come to mind?

## STEP 4

So now that you have seen the results, consider how you can use this information to make a positive impact in your community or take informed action to solve a problem. To do this, take some time to consider questions from the “Data Reflection: Problem Solving For The Future” handout in this document.

**STUDENT HANDOUT I**

# COLLECTING DATA TIPS AND TRICKS

## CREATING YOUR SURVEY

### Keep the survey focused

- Keep in mind that it may be difficult to get respondents to complete a lengthy survey. Work to keep your survey focused on your research question.

### Response scales can be helpful to determine the intensity of feeling

- While it is fine to use *yes/no* or binary questions, consider including questions that provide a range of structured responses based on how strongly you feel about a topic. Responses may range from “*never*” or “*not at all*,” all the way to “*always*” or “*extremely*.”

### Try not to ask biased or leading questions

- When framing questions, avoid value statements or language that leads a respondent to a particular answer or desired response.

### Create opportunities to clarify Yes/No Questions

- Create opportunities for respondents to clarify as to why they said yes or no by including qualifiers like “*to what degree*” or “*how often*.”

*For more information on creating your survey, consider visiting an online resource such as:*

[11 Tips for building effective surveys | Qualtrics](#)

## ADMINISTERING YOUR SURVEY

### Survey platform

- As you create your survey, consider how you will administer the survey to yield the best results. You may choose to simply administer the survey in a paper form and calculate the data by hand, or you may choose to use one of the many digital platforms to increase efficiency. Many of these platforms are available at no cost and can calculate the results for you in a variety of ways. Check with your teacher or the adult in charge about which sites are best for you to access.

### Sample size and population

- It’s important to capture responses from individuals with diverse backgrounds because their experiences may lead them to have different answers and perspectives. Gathering perspectives from diverse groups can help provide a more holistic understanding of ideas on how Census participation could improve or barriers that exist to participation.

*For more information on sample size, consider visiting an online resource such as:*

[How many survey responses do I need to be statistically valid? | SurveyMonkey](#)

**STUDENT HANDOUT 2**

# DATA REFLECTION: PROBLEM SOLVING FOR THE FUTURE

1. What does the data tell me?
  - a. *What surprised you?*
  - b. *What did you expect?*
  - c. *Did you notice any patterns?*
  
2. What could I have done differently to collect more **accurate** data?
  - a. *How many responses do I have?*
  - b. *Did responses represent a valuable sample size?*
  - c. *Was there confusion from the respondents on any of my questions?*
  
3. How can this data help me answer the question: “How can Census participation increase?”
  
4. What might be the best way to display or visualize this data for others?
  
5. Who might need to see this data?
  
6. How might I or someone else use this data to make a positive impact or take informed action?
  
7. What additional questions or information might you like to ask in a follow-up survey?

## STUDENT HANDOUT 3

# 2010 CENSUS: POPULATION CHANGE DATA

State or Region	1910	1920	1930	1940	1950	1960	1970	1980	1990	2000	2010
<b>United States</b>											
Population	92,228,531	106,021,568	123,202,660	132,165,129	151,325,798	179,323,175	203,211,926	226,545,805	248,709,873	281,421,906	308,745,538
Percent Change	21.0%	15.0%	16.2%	7.3%	14.5%	18.5%	13.3%	11.5%	9.8%	13.2%	9.7%
<b>Northeast</b>											
Population	25,868,573	29,662,053	34,427,091	35,976,777	39,477,986	44,677,819	49,040,703	49,135,283	50,809,229	53,594,378	55,317,240
Percent Change	22.9%	14.7%	16.1%	4.5%	9.7%	13.2%	9.8%	0.2%	3.4%	5.5%	3.2%
<b>Midwest</b>											
Population	29,888,542	34,019,792	38,594,100	40,143,332	44,460,762	51,619,139	56,571,663	58,865,670	59,668,632	64,392,776	66,927,001
Percent Change	13.5%	13.8%	13.4%	4.0%	10.8%	16.1%	9.6%	4.1%	1.4%	7.9%	3.9%
<b>South</b>											
Population	29,389,330	33,125,803	37,857,633	41,665,901	47,197,088	54,973,113	62,795,367	75,372,362	85,445,930	100,236,820	114,555,744
Percent Change	19.8%	12.7%	14.3%	10.1%	13.3%	16.5%	14.2%	20.0%	13.4%	17.3%	14.3%
<b>West</b>											
Population	7,082,086	9,213,920	12,323,836	14,379,119	20,189,962	28,053,104	34,804,193	43,172,490	52,786,082	63,197,932	71,945,553
Percent Change	64.4%	30.1%	33.8%	16.7%	40.4%	38.9%	24.1%	24.0%	22.3%	19.7%	13.8%
<b>Alabama</b>											
Population	2,138,093	2,348,174	2,646,248	2,832,961	3,061,743	3,266,740	3,444,165	3,893,888	4,040,587	4,447,100	4,779,736
Percent Change	16.9%	9.8%	12.7%	7.1%	8.1%	6.7%	5.4%	13.1%	3.8%	10.1%	7.5%
<b>Alaska</b>											
Population	64,356	55,036	59,278	72,524	128,643	226,167	300,382	401,851	550,043	626,932	710,231
Percent Change	1.2%	-14.5%	7.7%	22.3%	77.4%	75.8%	32.8%	33.8%	36.9%	14.0%	13.3%
<b>Arizona</b>											
Population	204,354	334,162	435,573	499,261	749,587	1,302,161	1,770,900	2,718,215	3,665,228	5,130,632	6,392,017
Percent Change	66.2%	63.5%	30.3%	14.6%	50.1%	73.7%	36.0%	53.5%	34.8%	40.0%	24.6%
<b>Arkansas</b>											
Population	1,574,449	1,752,204	1,854,482	1,949,387	1,909,511	1,786,272	1,923,295	2,286,435	2,350,725	2,673,400	2,915,918
Percent Change	20.0%	11.3%	5.8%	5.1%	-2.0%	-6.5%	7.7%	18.9%	2.8%	13.7%	9.1%
<b>California</b>											
Population	2,377,549	3,426,861	5,677,251	6,907,387	10,586,223	15,717,204	19,953,134	23,667,902	29,760,021	33,871,648	37,253,956
Percent Change	60.1%	44.1%	65.7%	21.7%	53.3%	48.5%	27.0%	18.6%	25.7%	13.8%	10.0%
<b>Colorado</b>											
Population	799,024	939,629	1,035,791	1,123,296	1,325,089	1,753,947	2,207,259	2,889,964	3,294,394	4,301,261	5,029,196
Percent Change	48.0%	17.6%	10.2%	8.4%	18.0%	32.4%	25.8%	30.9%	14.0%	30.6%	16.9%
<b>Connecticut</b>											
Population	1,114,756	1,380,631	1,606,903	1,709,242	2,007,280	2,535,234	3,031,709	3,107,576	3,287,116	3,405,565	3,574,097
Percent Change	22.7%	23.9%	16.4%	6.4%	17.4%	26.3%	19.6%	2.5%	5.8%	3.6%	4.9%
<b>Delaware</b>											
Population	202,322	223,003	238,380	266,505	318,085	446,292	548,104	594,338	666,168	783,600	897,934
Percent Change	9.5%	10.2%	6.9%	11.8%	19.4%	40.3%	22.8%	8.4%	12.1%	17.6%	14.6%
<b>District of Columbia</b>											
Population	331,069	437,571	486,869	663,091	802,178	763,956	756,510	638,333	606,900	572,059	601,723
Percent Change	18.8%	32.2%	11.3%	36.2%	21.0%	-4.8%	-1.0%	-15.6%	-4.9%	-5.7%	5.2%

## STUDENT HANDOUT 3

State or Region	1910	1920	1930	1940	1950	1960	1970	1980	1990	2000	2010
<b>Florida</b>											
Population	752,619	968,470	1,468,211	1,897,414	2,771,305	4,951,560	6,789,443	9,746,324	12,937,926	15,982,378	18,801,310
Percent Change	42.4%	28.7%	51.6%	29.2%	46.1%	78.7%	37.1%	43.6%	32.7%	23.5%	17.6%
<b>Georgia</b>											
Population	2,609,121	2,895,832	2,908,506	3,123,723	3,444,578	3,943,116	4,589,575	5,463,105	6,478,216	8,186,453	9,687,653
Percent Change	17.7%	11.0%	0.4%	7.4%	10.3%	14.5%	16.4%	19.0%	18.6%	26.4%	18.3%
<b>Hawaii</b>											
Population	191,909	255,912	368,336	423,330	499,794	632,772	768,561	964,691	1,108,229	1,211,537	1,360,301
Percent Change	24.6%	33.4%	43.9%	14.9%	18.1%	26.6%	21.5%	25.5%	14.9%	9.3%	12.3%
<b>Idaho</b>											
Population	325,594	431,866	445,032	524,873	588,637	667,191	712,567	943,935	1,006,749	1,293,953	1,567,582
Percent Change	101.3%	32.6%	3.0%	17.9%	12.1%	13.3%	6.8%	32.5%	6.7%	28.5%	21.1%
<b>Illinois</b>											
Population	5,638,591	6,485,280	7,630,654	7,897,241	8,712,176	10,081,158	11,113,976	11,426,518	11,430,602	12,419,293	12,830,632
Percent Change	16.9%	15.0%	17.7%	3.5%	10.3%	15.7%	10.2%	2.8%	0.0%	8.6%	3.3%
<b>Indiana</b>											
Population	2,700,876	2,930,390	3,238,503	3,427,796	3,934,224	4,662,498	5,193,669	5,490,224	5,544,159	6,080,485	6,483,802
Percent Change	7.3%	8.5%	10.5%	5.8%	14.8%	18.5%	11.4%	5.7%	1.0%	9.7%	6.6%
<b>Iowa</b>											
Population	2,224,771	2,404,021	2,470,939	2,538,268	2,621,073	2,757,537	2,824,376	2,913,808	2,776,755	2,926,324	3,046,355
Percent Change	-0.3%	8.1%	2.8%	2.7%	3.3%	5.2%	2.4%	3.2%	-4.7%	5.4%	4.1%
<b>Kansas</b>											
Population	1,690,949	1,769,257	1,880,999	1,801,028	1,905,299	2,178,611	2,246,578	2,363,679	2,477,574	2,688,418	2,853,118
Percent Change	15.0%	4.6%	6.3%	-4.3%	5.8%	14.3%	3.1%	5.2%	4.8%	8.5%	6.1%
<b>Kentucky</b>											
Population	2,289,905	2,416,630	2,614,589	2,845,627	2,944,806	3,038,156	3,218,706	3,660,777	3,685,296	4,041,769	4,339,367
Percent Change	6.6%	5.5%	8.2%	8.8%	3.5%	3.2%	5.9%	13.7%	0.7%	9.7%	7.4%
<b>Louisiana</b>											
Population	1,656,388	1,798,509	2,101,593	2,363,880	2,683,516	3,257,022	3,641,306	4,205,900	4,219,973	4,468,976	4,533,372
Percent Change	19.9%	8.6%	16.9%	12.5%	13.5%	21.4%	11.8%	15.5%	0.3%	5.9%	1.4%
<b>Maine</b>											
Population	742,371	768,014	797,423	847,226	913,774	969,265	992,048	1,124,660	1,227,928	1,274,923	1,328,361
Percent Change	6.9%	3.5%	3.8%	6.2%	7.9%	6.1%	2.4%	13.4%	9.2%	3.8%	4.2%
<b>Maryland</b>											
Population	1,295,346	1,449,661	1,631,526	1,821,244	2,343,001	3,100,689	3,922,399	4,216,975	4,781,468	5,296,486	5,773,552
Percent Change	9.0%	11.9%	12.5%	11.6%	28.6%	32.3%	26.5%	7.5%	13.4%	10.8%	9.0%
<b>Massachusetts</b>											
Population	3,366,416	3,852,356	4,249,614	4,316,721	4,690,514	5,148,578	5,689,170	5,737,037	6,016,425	6,349,097	6,547,629
Percent Change	20.0%	14.4%	10.3%	1.6%	8.7%	9.8%	10.5%	0.8%	4.9%	5.5%	3.1%
<b>Michigan</b>											
Population	2,810,173	3,668,412	4,842,325	5,256,106	6,371,766	7,823,194	756,510	638,333	606,900	572,059	601,723
Percent Change	16.1%	30.5%	32.0%	8.5%	21.2%	22.8%	-1.0%	-15.6%	-4.9%	-5.7%	5.2%
<b>Minnesota</b>											
Population	2,075,708	2,387,125	2,563,953	2,792,300	2,982,483	3,413,864	6,789,443	9,746,324	12,937,926	15,982,378	18,801,310
Percent Change	18.5%	15.0%	7.4%	8.9%	6.8%	14.5%	37.1%	43.6%	32.7%	23.5%	17.6%

## STUDENT HANDOUT 3

State or Region	1910	1920	1930	1940	1950	1960	1970	1980	1990	2000	2010
<b>Mississippi</b>											
Population	1,797,114	1,790,618	2,009,821	2,183,796	2,178,914	2,178,141	4,589,575	5,463,105	6,478,216	8,186,453	9,687,653
Percent Change	15.8%	-0.4%	12.2%	8.7%	-0.2%	0.0%	16.4%	19.0%	18.6%	26.4%	18.3%
<b>Missouri</b>											
Population	3,293,335	3,404,055	3,629,367	3,784,664	3,954,653	4,319,813	768,561	964,691	1,108,229	1,211,537	1,360,301
Percent Change	6.0%	3.4%	6.6%	4.3%	4.5%	9.2%	21.5%	25.5%	14.9%	9.3%	12.3%
<b>Montana</b>											
Population	376,053	548,889	537,606	559,456	591,024	674,767	712,567	943,935	1,006,749	1,293,953	1,567,582
Percent Change	54.5%	46.0%	-2.1%	4.1%	5.6%	14.2%	6.8%	32.5%	6.7%	28.5%	21.1%
<b>Nebraska</b>											
Population	1,192,214	1,296,372	1,377,963	1,315,834	1,325,510	1,411,330	11,113,976	11,426,518	11,430,602	12,419,293	12,830,632
Percent Change	11.8%	8.7%	6.3%	-4.5%	0.7%	6.5%	10.2%	2.8%	0.0%	8.6%	3.3%
<b>Nevada</b>											
Population	81,875	77,407	91,058	110,247	160,083	285,278	5,193,669	5,490,224	5,544,159	6,080,485	6,483,802
Percent Change	93.4%	-5.5%	17.6%	21.1%	45.2%	78.2%	11.4%	5.7%	1.0%	9.7%	6.6%
<b>New Hampshire</b>											
Population	430,572	443,083	465,293	491,524	533,242	606,921	2,824,376	2,913,808	2,776,755	2,926,324	3,046,355
Percent Change	4.6%	2.9%	5.0%	5.6%	8.5%	13.8%	2.4%	3.2%	-4.7%	5.4%	4.1%
<b>New Jersey</b>											
Population	2,537,167	3,155,900	4,041,334	4,160,165	4,835,329	6,066,782	2,246,578	2,363,679	2,477,574	2,688,418	2,853,118
Percent Change	34.7%	24.4%	28.1%	2.9%	16.2%	25.5%	3.1%	5.2%	4.8%	8.5%	6.1%
<b>New Mexico</b>											
Population	327,301	360,350	423,317	531,818	681,187	951,023	3,218,706	3,660,777	3,685,296	4,041,769	4,339,367
Percent Change	67.6%	10.1%	17.5%	25.6%	28.1%	39.6%	5.9%	13.7%	0.7%	9.7%	7.4%
<b>New York</b>											
Population	9,113,614	10,385,227	12,588,066	13,479,142	14,830,192	16,782,304	3,641,306	4,205,900	4,219,973	4,468,976	4,533,372
Percent Change	25.4%	14.0%	21.2%	7.1%	10.0%	13.2%	11.8%	15.5%	0.3%	5.9%	1.4%
<b>North Carolina</b>											
Population	2,206,287	2,559,123	3,170,276	3,571,623	4,061,929	4,556,155	992,048	1,124,660	1,227,928	1,274,923	1,328,361
Percent Change	16.5%	16.0%	23.9%	12.7%	13.7%	12.2%	2.4%	13.4%	9.2%	3.8%	4.2%
<b>North Dakota</b>											
Population	577,056	646,872	680,845	641,935	619,636	632,446	3,922,399	4,216,975	4,781,468	5,296,486	5,773,552
Percent Change	80.8%	12.1%	5.3%	-5.7%	-3.5%	2.1%	26.5%	7.5%	13.4%	10.8%	9.0%
<b>Ohio</b>											
Population	4,767,121	5,759,394	6,646,697	6,907,612	7,946,627	9,706,397	5,689,170	5,737,037	6,016,425	6,349,097	6,547,629
Percent Change	14.7%	20.8%	15.4%	3.9%	15.0%	22.1%	10.5%	0.8%	4.9%	5.5%	3.1%
<b>Oklahoma</b>											
Population	1,657,155	2,028,283	2,396,040	2,336,434	2,233,351	2,328,284	2,559,229	3,025,290	3,145,585	3,450,654	3,751,351
Percent Change	109.7%	22.4%	18.1%	-2.5%	-4.4%	4.3%	9.9%	18.2%	4.0%	9.7%	8.7%
<b>Oregon</b>											
Population	672,765	783,389	953,786	1,089,684	1,521,341	1,768,687	2,091,385	2,633,105	2,842,321	3,421,399	3,831,074
Percent Change	62.7%	16.4%	21.8%	14.2%	39.6%	16.3%	18.2%	25.9%	7.9%	20.4%	12.0%
<b>Pennsylvania</b>											
Population	7,665,111	8,720,017	9,631,350	9,900,180	10,498,012	11,319,366	11,793,909	11,863,895	11,881,643	12,281,054	12,702,379
Percent Change	21.6%	13.8%	10.5%	2.8%	6.0%	7.8%	4.2%	0.6%	0.1%	3.4%	3.4%

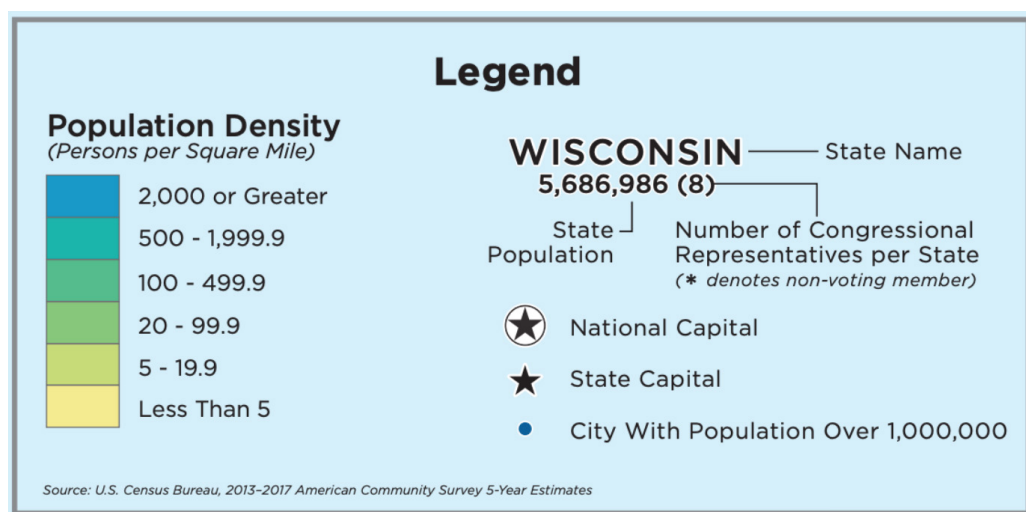
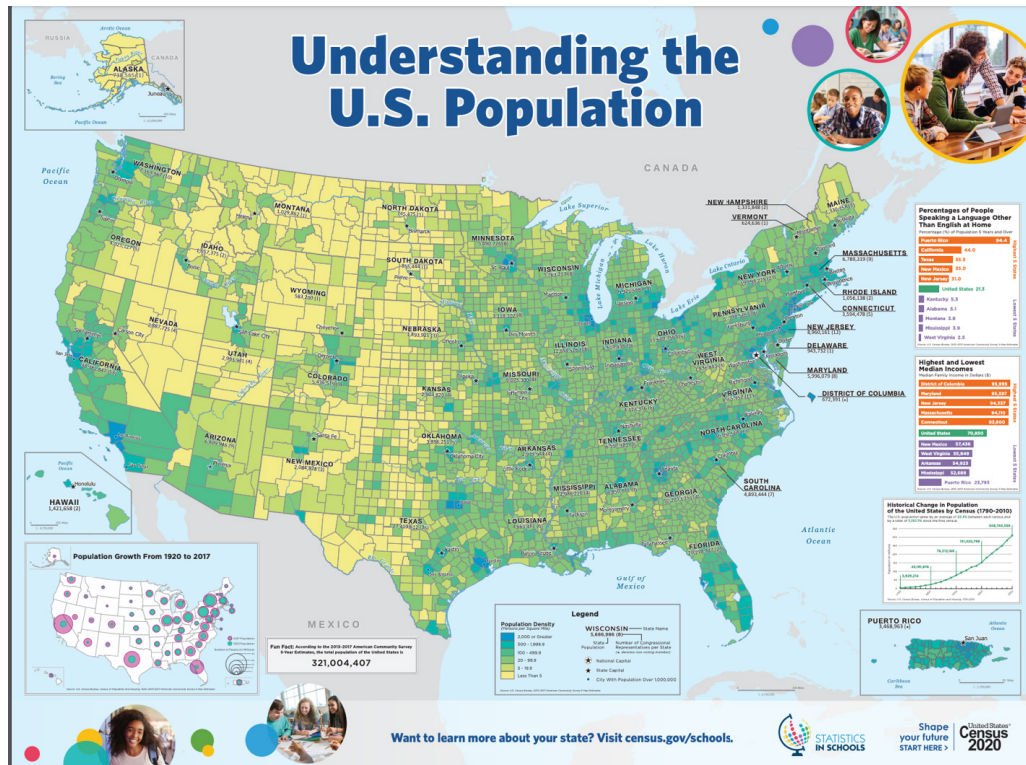
## STUDENT HANDOUT 3

State or Region	1910	1920	1930	1940	1950	1960	1970	1980	1990	2000	2010
<b>Rhode Island</b>											
Population	542,610	604,397	687,497	713,346	791,896	859,488	946,725	947,154	1,003,464	1,048,319	1,052,567
Percent Change	26.6%	11.4%	13.7%	3.8%	11.0%	8.5%	10.1%	0.0%	5.9%	4.5%	0.4%
<b>South Carolina</b>											
Population	1,515,400	1,683,724	1,738,765	1,899,804	2,117,027	2,382,594	2,590,516	3,121,820	3,486,703	4,012,012	4,625,364
Percent Change	13.1%	11.1%	3.3%	9.3%	11.4%	12.5%	8.7%	20.5%	11.7%	15.1%	15.3%
<b>South Dakota</b>											
Population	583,888	636,547	692,849	642,961	652,740	680,514	665,507	690,768	696,004	754,844	814,180
Percent Change	45.4%	9.0%	8.8%	-7.2%	1.5%	4.3%	-2.2%	3.8%	0.8%	8.5%	7.9%
<b>Tennessee</b>											
Population	2,184,789	2,337,885	2,616,556	2,915,841	3,291,718	3,567,089	3,923,687	4,591,120	4,877,185	5,689,283	6,346,105
Percent Change	8.1%	7.0%	11.9%	11.4%	12.9%	8.4%	10.0%	17.0%	6.2%	16.7%	11.5%
<b>Texas</b>											
Population	3,896,542	4,663,228	5,824,715	6,414,824	7,711,194	9,579,677	11,196,730	14,229,191	16,986,510	20,851,820	25,145,561
Percent Change	27.8%	19.7%	24.9%	10.1%	20.2%	24.2%	16.9%	27.1%	19.4%	22.8%	20.6%
<b>Utah</b>											
Population	373,351	449,396	507,847	550,310	688,862	890,627	1,059,273	1,461,037	1,722,850	2,233,169	2,763,885
Percent Change	34.9%	20.4%	13.0%	8.4%	25.2%	29.3%	18.9%	37.9%	17.9%	29.6%	23.8%
<b>Vermont</b>											
Population	355,956	352,428	359,611	359,231	377,747	389,881	444,330	511,456	562,758	608,827	625,741
Percent Change	3.6%	-1.0%	2.0%	-0.1%	5.2%	3.2%	14.0%	15.1%	10.0%	8.2%	2.8%
<b>Virginia</b>											
Population	2,061,612	2,309,187	2,421,851	2,677,773	3,318,680	3,966,949	4,648,494	5,346,818	6,187,358	7,078,515	8,001,024
Percent Change	11.2%	12.0%	4.9%	10.6%	23.9%	19.5%	17.2%	15.0%	15.7%	14.4%	13.0%
<b>Washington</b>											
Population	1,141,990	1,356,621	1,563,396	1,736,191	2,378,963	2,853,214	3,409,169	4,132,156	4,866,692	5,894,121	6,724,540
Percent Change	120.4%	18.8%	15.2%	11.1%	37.0%	19.9%	19.5%	21.2%	17.8%	21.1%	14.1%
<b>West Virginia</b>											
Population	1,221,119	1,463,701	1,729,205	1,901,974	2,005,552	1,860,421	1,744,237	1,949,644	1,793,477	1,808,344	1,852,994
Percent Change	27.4%	19.9%	18.1%	10.0%	5.4%	-7.2%	-6.2%	11.8%	-8.0%	0.8%	2.5%
<b>Wisconsin</b>											
Population	2,333,860	2,632,067	2,939,006	3,137,587	3,434,575	3,951,777	4,417,731	4,705,767	4,891,769	5,363,675	5,686,986
Percent Change	12.8%	12.8%	11.7%	6.8%	9.5%	15.1%	11.8%	6.5%	4.0%	9.6%	6.0%
<b>Wyoming</b>											
Population	145,965	194,402	225,565	250,742	290,529	330,066	332,416	469,557	453,588	493,782	563,626
Percent Change	57.7%	33.2%	16.0%	11.2%	15.9%	13.6%	0.7%	41.3%	-3.4%	8.9%	14.1%
<b>Puerto Rico</b>											
Population	1,118,012	1,299,809	1,543,913	1,869,255	2,210,703	2,349,544	2,712,033	3,196,520	3,522,037	3,808,610	3,725,789
Percent Change	17.3%	16.3%	18.8%	21.1%	18.3%	6.3%	15.4%	17.9%	10.2%	8.1%	-2.2%

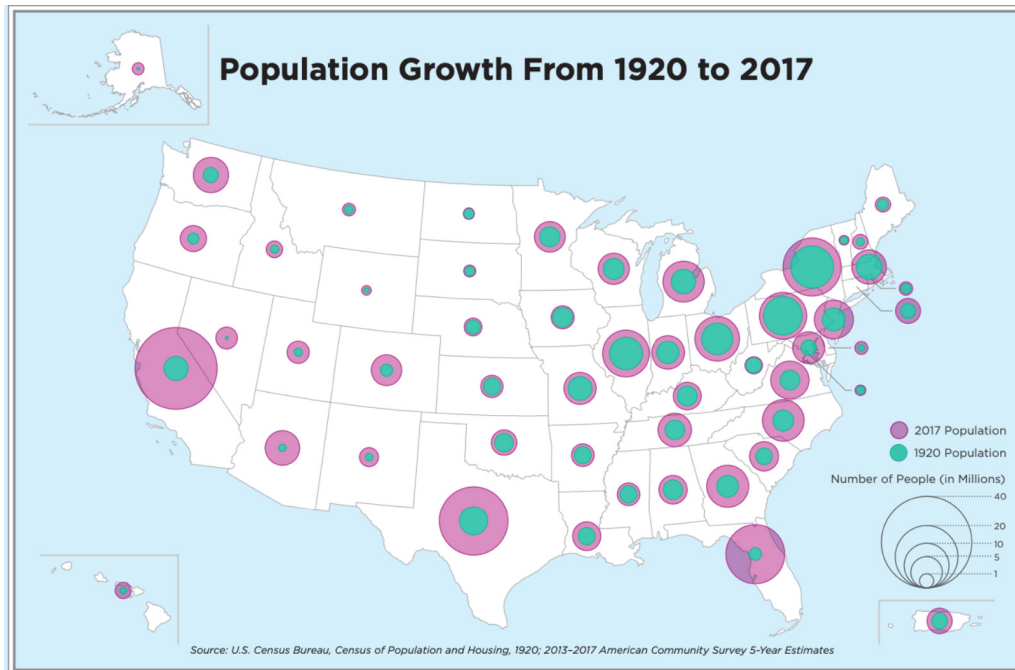
Source: US Census Bureau, [2010 Census: Population Change Data \(Text Version\)](#)



## MICRO MAPS FROM THE INFOGRAPHIC



## STUDENT HANDOUT 3



### Highest and Lowest Median Incomes

Median Family Income in Dollars (\$)

<b>District of Columbia</b>	<b>95,995</b>	Highest 5 States
<b>Maryland</b>	<b>95,597</b>	
<b>New Jersey</b>	<b>94,337</b>	
<b>Massachusetts</b>	<b>94,110</b>	
<b>Connecticut</b>	<b>93,800</b>	
<b>United States</b>	<b>70,850</b>	
<b>New Mexico</b>	<b>57,436</b>	Lowest 5 States
<b>West Virginia</b>	<b>55,949</b>	
<b>Arkansas</b>	<b>54,923</b>	
<b>Mississippi</b>	<b>52,689</b>	
<b>Puerto Rico</b>	<b>23,793</b>	

Source: U.S. Census Bureau, 2013-2017 American Community Survey 5-Year Estimates

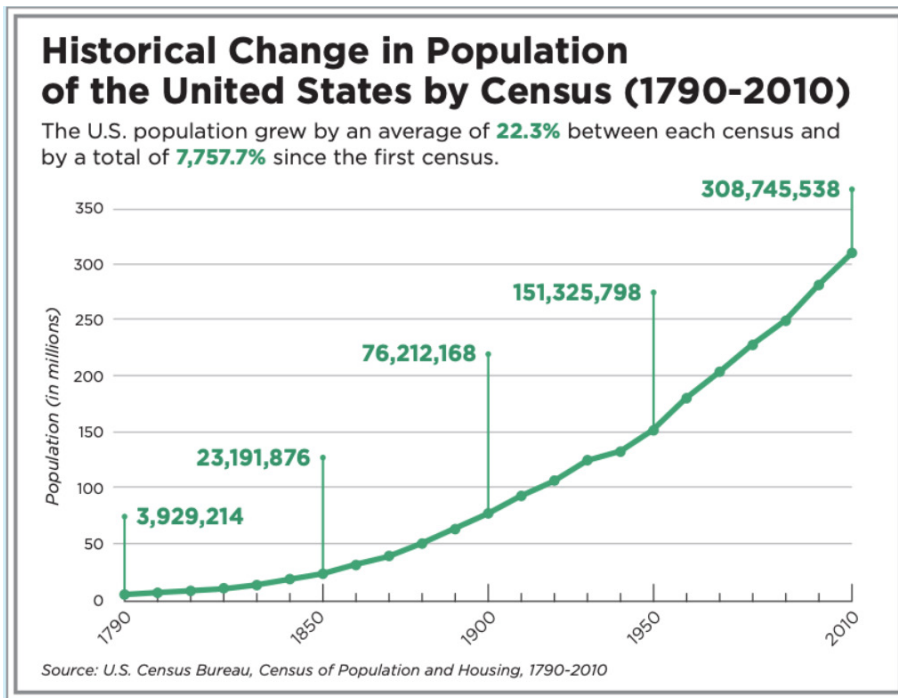
### Percentages of People Speaking a Language Other Than English at Home

Percentage (%) of Population 5 Years and Over

<b>Puerto Rico</b>	<b>94.4</b>	Highest 5 States
<b>California</b>	<b>44.0</b>	
<b>Texas</b>	<b>35.3</b>	
<b>New Mexico</b>	<b>35.0</b>	
<b>New Jersey</b>	<b>31.0</b>	
<b>United States</b>	<b>21.3</b>	
<b>Kentucky</b>	<b>5.3</b>	Lowest 5 States
<b>Alabama</b>	<b>5.1</b>	
<b>Montana</b>	<b>3.9</b>	
<b>Mississippi</b>	<b>3.9</b>	
<b>West Virginia</b>	<b>2.5</b>	

Source: U.S. Census Bureau, 2013-2017 American Community Survey 5-Year Estimates

## STUDENT HANDOUT 3



**Source:** US Census Bureau, [Understanding the US Population](#)

**STUDENT HANDOUT 3**

# VOTING RATES IN PRESIDENTIAL ELECTIONS

State	Voting Rates									
	2016		2012		2008		2004		2000	
	Total	Citizen	Total	Citizen	Total	Citizen	Total	Citizen	Total	Citizen
Alabama	56.4	57.4	59.9	61.9	60.8	62.4	61.8	63.2	59.6	60.4
Alaska	59.4	61.3	56.0	58.4	62.4	65.0	65.0	67.6	65.5	67.7
Arizona	53.3	60.4	49.6	55.9	53.3	59.9	54.3	63.8	46.7	52.5
Arkansas	56.0	58.7	51.1	53.3	51.8	53.8	56.7	58.7	49.4	50.6
California	48.2	57.9	47.5	57.4	57.5	63.4	49.1	61.9	48.4	52.8
Colorado	63.8	69.5	65.4	70.4	62.5	68.4	61.7	67.5	53.6	57.2
Connecticut	57.5	63.9	57.5	62.7	60.8	67.2	58.5	63.2	55.2	59.5
Delaware	57.2	62.3	62.2	67.3	63.0	67.3	62.8	66.4	62.2	64.8
District of Columbia	88.7	74.3	67.7	75.9	65.3	74.1	62.0	69.2	65.6	71.7
Florida	52.9	59.5	53.9	60.8	56.5	63.8	56.1	64.3	51.6	59.6
Georgia	55.7	60.2	58.1	61.9	59.6	64.2	52.6	56.8	49.0	50.9
Hawaii	43.3	47.3	47.4	51.6	46.8	51.8	46.2	50.8	39.7	44.1
Idaho	58.3	62.1	60.2	63.9	58.8	61.4	58.7	61.6	53.9	56.1
Illinois	58.8	63.8	56.2	61.5	57.1	62.6	61.0	65.6	56.8	62.0
Indiana	56.0	58.3	57.7	59.3	58.8	60.5	57.3	58.6	59.5	59.6
Iowa	60.7	63.4	66.7	69.4	66.9	70.2	68.8	71.3	64.1	67.4
Kansas	56.0	61.3	58.9	63.3	59.8	63.1	59.7	64.2	60.2	61.7
Kentucky	55.3	57.0	57.6	59.3	61.4	63.1	63.4	65.0	54.9	56.4
Louisiana	59.7	61.6	64.7	66.3	68.0	70.3	63.1	64.2	64.6	65.7
Maine	71.3	72.7	67.2	68.6	70.2	71.2	72.0	73.1	69.2	70.1
Maryland	59.2	65.8	58.7	65.1	61.9	68.3	59.7	65.6	57.1	61.1
Massachusetts	61.7	66.7	65.4	70.8	61.3	67.1	63.7	68.6	60.1	65.3
Michigan	61.8	64.3	64.5	66.8	65.0	67.8	64.7	67.1	60.1	62.4
Minnesota	65.3	68.7	70.5	73.2	70.8	75.0	76.7	79.2	67.8	69.8
Mississippi	66.7	67.7	73.3	74.5	68.2	69.7	60.7	61.7	59.8	60.6
Missouri	62.8	64.8	62.3	63.9	64.2	65.8	66.3	68.5	65.4	66.7
Montana	65.2	65.9	64.5	65.7	64.7	65.4	69.9	70.2	62.2	62.9
Nebraska	63.4	66.8	58.2	61.6	64.5	67.3	61.3	65.3	58.9	60.3
Nevada	53.5	60.5	51.4	57.9	52.8	59.9	51.3	58.9	46.5	52.1
New Hampshire	66.9	69.0	66.9	69.4	69.8	71.2	67.6	71.5	63.3	66.6
New Jersey	53.4	61.5	54.5	61.9	56.0	64.1	57.6	66.0	55.2	61.8
New Mexico	49.4	54.8	56.5	61.6	57.4	62.6	60.9	64.4	51.3	54.4
New York	50.7	57.2	50.9	58.7	51.5	58.8	53.1	60.2	51.0	59.0
North Carolina	61.6	67.5	63.7	68.9	63.8	67.5	58.2	61.4	53.2	56.1
North Dakota	62.1	64.2	62.2	63.9	66.3	67.5	70.8	71.5	69.8	70.4
Ohio	61.4	63.6	61.7	63.1	64.5	65.5	64.8	66.1	58.1	59.2
Oklahoma	53.2	56.6	51.0	52.4	56.5	58.7	59.2	62.3	58.3	59.6
Oregon	61.0	66.3	63.3	67.6	62.6	67.6	70.6	74.0	60.8	67.5
Pennsylvania	60.2	62.6	59.1	61.6	60.8	62.4	62.5	64.5	55.7	57.4
Rhode Island	55.5	60.6	57.4	62.5	63.0	67.4	57.4	63.7	60.1	63.5
South Carolina	59.8	62.1	62.2	64.7	63.4	65.6	62.0	63.2	58.9	59.5
South Dakota	57.3	59.1	60.1	61.0	66.1	67.8	67.1	68.3	58.7	59.2
Tennessee	52.0	54.0	53.7	55.7	53.6	55.5	52.7	54.6	52.3	53.7
Texas	47.7	55.4	46.4	53.8	48.8	56.1	50.3	57.1	48.2	54.1
Utah	58.9	62.7	53.3	57.0	50.5	53.1	62.8	67.8	56.3	60.2
Vermont	61.0	62.5	62.1	63.3	63.2	64.7	65.4	67.3	63.3	64.2
Virginia	62.6	68.2	62.0	66.9	63.8	68.7	58.4	63.1	57.2	60.3
Washington	60.5	66.3	60.7	65.6	62.6	66.8	62.0	67.6	58.6	62.0
West Virginia	50.4	50.8	47.5	53.4	53.4	53.4	52.2	57.2	52.1	52.4
Wisconsin	68.7	70.5	71.9	73.6	68.5	71.2	73.0	76.6	67.8	70.1
Wyoming	63.5	64.8	57.8	58.9	62.9	64.3	66.3	66.9	62.5	62.9

Note: Data for 1976 show the 25 largest states and data for 1972 show the largest 15 states. Data are limited to the largest states in 1976 and 1972 due to smaller sample sizes.

Note: Data are not available prior to 1972.

Prior to 1996, the CPS did not collect information on citizenship in a uniform way. Estimates for the citizenship population presented in this table prior to 1996 should be interpreted with caution, as they are not directly comparable to estimates from 1996 and after.

Source: U.S. Census Bureau, Current Population Report, November 2016 and earlier years.

## STUDENT HANDOUT 3

Table A-5. Reported Voting and Registration for Total and Citizen Voting-Age Population, by State for Presidential Elections: 1972-2016 (Continued)  
(Percent)

State	Voting Rates							
	1988		1984		1980		1976	1972
	Total	Citizen	Total	Citizen	Total	Citizen	Total	Total
Alabama	56.9	57.6	60.8	62.3	56.4	57.3	54.6	NA
Alaska	59.4	63.9	59.1	63.4	56.8	62.7	NA	NA
Arizona	54.0	57.8	54.0	58.1	53.5	57.8	NA	NA
Arkansas	55.8	57.2	60.4	61.2	57.2	58.6	NA	NA
California	51.7	64.8	55.7	68.0	53.8	64.9	54.8	66.0
Colorado	65.4	69.2	60.5	64.4	63.4	67.0	NA	NA
Connecticut	63.9	69.2	64.2	68.6	67.6	72.9	64.4	NA
Delaware	58.7	61.4	59.0	64.9	60.4	62.9	NA	NA
District of Columbia	52.7	57.9	54.0	63.2	48.9	53.5	NA	NA
Florida	54.5	60.8	53.3	59.2	55.5	61.2	54.7	59.0
Georgia	49.6	51.7	52.4	55.7	53.5	55.0	54.1	49.2
Hawaii	54.8	60.3	54.5	61.5	55.9	63.5	NA	NA
Idaho	63.9	67.1	67.5	71.2	70.1	74.9	NA	NA
Illinois	60.7	65.8	66.9	73.6	66.4	72.0	65.6	71.1
Indiana	60.4	62.6	62.4	64.1	61.6	63.9	64.8	68.9
Iowa	63.6	64.9	68.6	70.1	67.7	69.9	67.6	NA
Kansas	60.6	62.8	63.3	66.2	63.6	65.8	NA	NA
Kentucky	49.7	50.9	59.0	60.6	56.9	58.3	55.6	NA
Louisiana	65.2	67.2	64.9	68.3	63.9	66.1	59.9	NA
Maine	66.7	68.5	68.7	71.9	68.2	71.8	NA	NA
Maryland	54.8	59.7	60.0	64.7	58.6	62.6	58.7	NA
Massachusetts	63.6	68.3	60.9	67.3	65.6	71.4	68.9	68.7
Michigan	59.5	64.8	62.3	66.6	64.1	69.5	64.0	65.1
Minnesota	69.7	74.4	75.6	78.0	73.3	76.3	75.4	NA
Mississippi	62.7	64.1	69.3	70.2	67.3	68.5	NA	NA
Missouri	64.5	66.2	65.5	67.7	67.3	70.0	63.1	65.4
Montana	68.6	69.7	70.8	74.0	67.6	71.0	NA	NA
Nebraska	63.5	65.7	62.7	65.4	63.3	66.1	NA	NA
Nevada	46.9	50.7	46.1	51.7	49.3	54.8	NA	NA
New Hampshire	58.1	59.8	59.7	61.7	68.2	70.5	NA	NA
New Jersey	59.5	65.1	60.9	67.1	59.6	65.7	59.1	66.7
New Mexico	54.6	59.3	61.7	64.8	58.8	61.9	NA	NA
New York	54.0	61.9	57.8	65.9	54.8	62.5	56.4	63.5
North Carolina	52.9	54.9	56.5	57.9	52.2	54.3	48.7	49.0
North Dakota	73.2	74.6	71.0	72.9	71.9	74.1	NA	NA
Ohio	62.1	64.3	62.3	64.7	60.7	63.8	59.5	65.6
Oklahoma	55.6	57.5	59.7	62.6	59.4	62.9	NA	NA
Oregon	63.8	66.1	67.0	71.1	65.9	71.9	NA	NA
Pennsylvania	54.8	56.9	58.6	61.5	54.9	57.9	57.3	61.0
Rhode Island	60.8	68.2	62.7	69.5	64.7	71.1	NA	NA
South Carolina	49.2	50.5	48.6	50.4	51.4	52.6	NA	NA
South Dakota	72.0	73.3	68.4	70.1	74.5	77.0	NA	NA
Tennessee	51.4	52.4	58.0	59.3	56.7	58.2	55.2	NA
Texas	53.9	59.2	54.4	59.4	51.1	55.9	53.2	55.0
Utah	69.8	72.9	71.3	74.1	72.2	74.5	NA	NA
Vermont	64.0	66.3	61.1	64.5	61.3	63.9	NA	NA
Virginia	58.0	60.5	56.6	59.7	55.2	57.6	55.2	49.3
Washington	61.9	64.6	64.5	69.5	61.2	68.0	64.4	NA
West Virginia	52.7	53.8	59.1	60.5	58.4	59.9	NA	NA
Wisconsin	70.2	71.3	71.5	73.6	74.5	77.3	72.4	NA
Wyoming	61.7	63.8	66.3	68.8	59.4	62.1	NA	NA

Note: Data for 1976 show the 25 largest states and data for 1972 show the largest 15 states. Data are limited to the largest states in 1976 and 1972.

Note: Data are not available prior to 1972.

Prior to 1996, the CPS did not collect information on citizenship in a uniform way. Estimates for the citizenship population presented here are interpreted with caution, as they are not directly comparable to estimates from 1996 and after.

Source: U.S. Census Bureau, Current Population Report, November 2016 and earlier years.

Nielsen: US Census Bureau, [Historical Reported Voting Rates](#) (Table A-5a)