

CURRICULUM CONNECTOR

UNDERSTANDING DIVERSE DEMOGRAPHICS

In these curriculum connectors, students will have the opportunity to interact with data to draw conclusions about the United States Census by:

- calculating and displaying state population data
- analyzing demographic patterns
- constructing arguments using data as evidence

CENSUS 2020: AMERICA BY THE NUMBERS

2020 is the year for the United States to count the nation's population, as outlined by the Constitution. Results from the Census, which takes place every ten years, allow citizens, governments, and businesses to gain valuable information on the changing demographics of a diverse country. Participation in the Census is vital since results not only help us understand our country, but also inform how the government allocates resources across communities. In the subsequent activities, students will use archived Census data to explore changes in US population density, diversity, and voting participation.

POPULATION COMPARISONS AND PREDICTIONS

2010 CENSUS: POPULATION CHANGE DATA

Activity Idea #1 (beginner)

Students will use the data from the 2010 Census to calculate the change in population using any range of time starting from 1990 and ending in 2010, from the most populated states to the least populated states. Then they will select a visual format to represent this data. Students can use charts, tables, or graphs to demonstrate these differences.

Activity Idea #2 (intermediate)

After reviewing the data from the chart, students will use an inquiry protocol such as a “Chalk Talk” to generate questions they may have regarding dramatic changes in population size. Begin the Chalk Talk by posting the topic as a statement starter or a question on chart paper for small groups. Students use markers to write on the paper, asking questions and making comments to the prompt and to each other’s posts. Students can then rotate in a carousel fashion to read each other’s posts and leave comments on other group members’ papers. Lastly, students will generate claims about potential 2020 population changes based on the historical data trends.

Note to Teacher: It may be helpful to provide sample claims to students or to compose a sample claim as a group.

Connect to: [Use Data to Make Claims, Analyze Proportional Relationships, Construct an Argument](#)

Visual/Graphic: [2010 Census: Population Change Data \(Text Version\)](#), Charts and graphs are provided below for settings without Internet access.

STUDENT HANDOUT

2010 CENSUS: POPULATION CHANGE DATA

State or Region	1910	1920	1930	1940	1950	1960	1970	1980	1990	2000	2010
United States											
Population	92,228,531	106,021,568	123,202,660	132,165,129	151,325,798	179,323,175	203,211,926	226,545,805	248,709,873	281,421,906	308,745,538
Percent Change	21.0%	15.0%	16.2%	7.3%	14.5%	18.5%	13.3%	11.5%	9.8%	13.2%	9.7%
Northeast											
Population	25,868,573	29,662,053	34,427,091	35,976,777	39,477,986	44,677,819	49,040,703	49,135,283	50,809,229	53,594,378	55,317,240
Percent Change	22.9%	14.7%	16.1%	4.5%	9.7%	13.2%	9.8%	0.2%	3.4%	5.5%	3.2%
Midwest											
Population	29,888,542	34,019,792	38,594,100	40,143,332	44,460,762	51,619,139	56,571,663	58,865,670	59,668,632	64,392,776	66,927,001
Percent Change	13.5%	13.8%	13.4%	4.0%	10.8%	16.1%	9.6%	4.1%	1.4%	7.9%	3.9%
South											
Population	29,389,330	33,125,803	37,857,633	41,665,901	47,197,088	54,973,113	62,795,367	75,372,362	85,445,930	100,236,820	114,555,744
Percent Change	19.8%	12.7%	14.3%	10.1%	13.3%	16.5%	14.2%	20.0%	13.4%	17.3%	14.3%
West											
Population	7,082,086	9,213,920	12,323,836	14,379,119	20,189,962	28,053,104	34,804,193	43,172,490	52,786,082	63,197,932	71,945,553
Percent Change	64.4%	30.1%	33.8%	16.7%	40.4%	38.9%	24.1%	24.0%	22.3%	19.7%	13.8%
Alabama											
Population	2,138,093	2,348,174	2,646,248	2,832,961	3,061,743	3,266,740	3,444,165	3,893,888	4,040,587	4,447,100	4,779,736
Percent Change	16.9%	9.8%	12.7%	7.1%	8.1%	6.7%	5.4%	13.1%	3.8%	10.1%	7.5%
Alaska											
Population	64,356	55,036	59,278	72,524	128,643	226,167	300,382	401,851	550,043	626,932	710,231
Percent Change	1.2%	-14.5%	7.7%	22.3%	77.4%	75.8%	32.8%	33.8%	36.9%	14.0%	13.3%
Arizona											
Population	204,354	334,162	435,573	499,261	749,587	1,302,161	1,770,900	2,718,215	3,665,228	5,130,632	6,392,017
Percent Change	66.2%	63.5%	30.3%	14.6%	50.1%	73.7%	36.0%	53.5%	34.8%	40.0%	24.6%
Arkansas											
Population	1,574,449	1,752,204	1,854,482	1,949,387	1,909,511	1,786,272	1,923,295	2,286,435	2,350,725	2,673,400	2,915,918
Percent Change	20.0%	11.3%	5.8%	5.1%	-2.0%	-6.5%	7.7%	18.9%	2.8%	13.7%	9.1%
California											
Population	2,377,549	3,426,861	5,677,251	6,907,387	10,586,223	15,717,204	19,953,134	23,667,902	29,760,021	33,871,648	37,253,956
Percent Change	60.1%	44.1%	65.7%	21.7%	53.3%	48.5%	27.0%	18.6%	25.7%	13.8%	10.0%
Colorado											
Population	799,024	939,629	1,035,791	1,123,296	1,325,089	1,753,947	2,207,259	2,889,964	3,294,394	4,301,261	5,029,196
Percent Change	48.0%	17.6%	10.2%	8.4%	18.0%	32.4%	25.8%	30.9%	14.0%	30.6%	16.9%
Connecticut											
Population	1,114,756	1,380,631	1,606,903	1,709,242	2,007,280	2,535,234	3,031,709	3,107,576	3,287,116	3,405,565	3,574,097
Percent Change	22.7%	23.9%	16.4%	6.4%	17.4%	26.3%	19.6%	2.5%	5.8%	3.6%	4.9%
Delaware											
Population	202,322	223,003	238,380	266,505	318,085	446,292	548,104	594,338	666,168	783,600	897,934
Percent Change	9.5%	10.2%	6.9%	11.8%	19.4%	40.3%	22.8%	8.4%	12.1%	17.6%	14.6%
District of Columbia											
Population	331,069	437,571	486,869	663,091	802,178	763,956	756,510	638,333	606,900	572,059	601,723
Percent Change	18.8%	32.2%	11.3%	36.2%	21.0%	-4.8%	-1.0%	-15.6%	-4.9%	-5.7%	5.2%

STUDENT HANDOUT

Florida											
Population	752,619	968,470	1,468,211	1,897,414	2,771,305	4,951,560	6,789,443	9,746,324	12,937,926	15,982,378	18,801,310
Percent Change	42.4%	28.7%	51.6%	29.2%	46.1%	78.7%	37.1%	43.6%	32.7%	23.5%	17.6%
Georgia											
Population	2,609,121	2,895,832	2,908,506	3,123,723	3,444,578	3,943,116	4,589,575	5,463,105	6,478,216	8,186,453	9,687,653
Percent Change	17.7%	11.0%	0.4%	7.4%	10.3%	14.5%	16.4%	19.0%	18.6%	26.4%	18.3%
Hawaii											
Population	191,909	255,912	368,336	423,330	499,794	632,772	768,561	964,691	1,108,229	1,211,537	1,360,301
Percent Change	24.6%	33.4%	43.9%	14.9%	18.1%	26.6%	21.5%	25.5%	14.9%	9.3%	12.3%
Idaho											
Population	325,594	431,866	445,032	524,873	588,637	667,191	712,567	943,935	1,006,749	1,293,953	1,567,582
Percent Change	101.3%	32.6%	3.0%	17.9%	12.1%	13.3%	6.8%	32.5%	6.7%	28.5%	21.1%
Illinois											
Population	5,638,591	6,485,280	7,630,654	7,897,241	8,712,176	10,081,158	11,113,976	11,426,518	11,430,602	12,419,293	12,830,632
Percent Change	16.9%	15.0%	17.7%	3.5%	10.3%	15.7%	10.2%	2.8%	0.0%	8.6%	3.3%
Indiana											
Population	2,700,876	2,930,390	3,238,503	3,427,796	3,934,224	4,662,498	5,193,669	5,490,224	5,544,159	6,080,485	6,483,802
Percent Change	7.3%	8.5%	10.5%	5.8%	14.8%	18.5%	11.4%	5.7%	1.0%	9.7%	6.6%
Iowa											
Population	2,224,771	2,404,021	2,470,939	2,538,268	2,621,073	2,757,537	2,824,376	2,913,808	2,776,755	2,926,324	3,046,355
Percent Change	-0.3%	8.1%	2.8%	2.7%	3.3%	5.2%	2.4%	3.2%	-4.7%	5.4%	4.1%
Kansas											
Population	1,690,949	1,769,257	1,880,999	1,801,028	1,905,299	2,178,611	2,246,578	2,363,679	2,477,574	2,688,418	2,853,118
Percent Change	15.0%	4.6%	6.3%	-4.3%	5.8%	14.3%	3.1%	5.2%	4.8%	8.5%	6.1%
Kentucky											
Population	2,289,905	2,416,630	2,614,589	2,845,627	2,944,806	3,038,156	3,218,706	3,660,777	3,685,296	4,041,769	4,339,367
Percent Change	6.6%	5.5%	8.2%	8.8%	3.5%	3.2%	5.9%	13.7%	0.7%	9.7%	7.4%
Louisiana											
Population	1,656,388	1,798,509	2,101,593	2,363,880	2,683,516	3,257,022	3,641,306	4,205,900	4,219,973	4,468,976	4,533,372
Percent Change	19.9%	8.6%	16.9%	12.5%	13.5%	21.4%	11.8%	15.5%	0.3%	5.9%	1.4%
Maine											
Population	742,371	768,014	797,423	847,226	913,774	969,265	992,048	1,124,660	1,227,928	1,274,923	1,328,361
Percent Change	6.9%	3.5%	3.8%	6.2%	7.9%	6.1%	2.4%	13.4%	9.2%	3.8%	4.2%
Maryland											
Population	1,295,346	1,449,661	1,631,526	1,821,244	2,343,001	3,100,689	3,922,399	4,216,975	4,781,468	5,296,486	5,773,552
Percent Change	9.0%	11.9%	12.5%	11.6%	28.6%	32.3%	26.5%	7.5%	13.4%	10.8%	9.0%
Massachusetts											
Population	3,366,416	3,852,356	4,249,614	4,316,721	4,690,514	5,148,578	5,689,170	5,737,037	6,016,425	6,349,097	6,547,629
Percent Change	20.0%	14.4%	10.3%	1.6%	8.7%	9.8%	10.5%	0.8%	4.9%	5.5%	3.1%
Michigan											
Population	2,810,173	3,668,412	4,842,325	5,256,106	6,371,766	7,823,194	756,510	638,333	606,900	572,059	601,723
Percent Change	16.1%	30.5%	32.0%	8.5%	21.2%	22.8%	-1.0%	-15.6%	-4.9%	-5.7%	5.2%
Minnesota											
Population	2,075,708	2,387,125	2,563,953	2,792,300	2,982,483	3,413,864	6,789,443	9,746,324	12,937,926	15,982,378	18,801,310
Percent Change	18.5%	15.0%	7.4%	8.9%	6.8%	14.5%	37.1%	43.6%	32.7%	23.5%	17.6%
Mississippi											
Population	1,797,114	1,790,618	2,009,821	2,183,796	2,178,914	2,178,141	4,589,575	5,463,105	6,478,216	8,186,453	9,687,653
Percent Change	15.8%	-0.4%	12.2%	8.7%	-0.2%	0.0%	16.4%	19.0%	18.6%	26.4%	18.3%

STUDENT HANDOUT

Michigan											
Population	2,810,173	3,668,412	4,842,325	5,256,106	6,371,766	7,823,194	756,510	638,333	606,900	572,059	601,723
Percent Change	16.1%	30.5%	32.0%	8.5%	21.2%	22.8%	-1.0%	-15.6%	-4.9%	-5.7%	5.2%
Minnesota											
Population	2,075,708	2,387,125	2,563,953	2,792,300	2,982,483	3,413,864	6,789,443	9,746,324	12,937,926	15,982,378	18,801,310
Percent Change	18.5%	15.0%	7.4%	8.9%	6.8%	14.5%	37.1%	43.6%	32.7%	23.5%	17.6%
Mississippi											
Population	1,797,114	1,790,618	2,009,821	2,183,796	2,178,914	2,178,141	4,589,575	5,463,105	6,478,216	8,186,453	9,687,653
Percent Change	15.8%	-0.4%	12.2%	8.7%	-0.2%	0.0%	16.4%	19.0%	18.6%	26.4%	18.3%
Missouri											
Population	3,293,335	3,404,055	3,629,367	3,784,664	3,954,653	4,319,813	768,561	964,691	1,108,229	1,211,537	1,360,301
Percent Change	6.0%	3.4%	6.6%	4.3%	4.5%	9.2%	21.5%	25.5%	14.9%	9.3%	12.3%
Montana											
Population	376,053	548,889	537,606	559,456	591,024	674,767	712,567	943,935	1,006,749	1,293,953	1,567,582
Percent Change	54.5%	46.0%	-2.1%	4.1%	5.6%	14.2%	6.8%	32.5%	6.7%	28.5%	21.1%
Nebraska											
Population	1,192,214	1,296,372	1,377,963	1,315,834	1,325,510	1,411,330	11,113,976	11,426,518	11,430,602	12,419,293	12,830,632
Percent Change	11.8%	8.7%	6.3%	-4.5%	0.7%	6.5%	10.2%	2.8%	0.0%	8.6%	3.3%
Nevada											
Population	81,875	77,407	91,058	110,247	160,083	285,278	5,193,669	5,490,224	5,544,159	6,080,485	6,483,802
Percent Change	93.4%	-5.5%	17.6%	21.1%	45.2%	78.2%	11.4%	5.7%	1.0%	9.7%	6.6%
New Hampshire											
Population	430,572	443,083	465,293	491,524	533,242	606,921	2,824,376	2,913,808	2,776,755	2,926,324	3,046,355
Percent Change	4.6%	2.9%	5.0%	5.6%	8.5%	13.8%	2.4%	3.2%	-4.7%	5.4%	4.1%
New Jersey											
Population	2,537,167	3,155,900	4,041,334	4,160,165	4,835,329	6,066,782	2,246,578	2,363,679	2,477,574	2,688,418	2,853,118
Percent Change	34.7%	24.4%	28.1%	2.9%	16.2%	25.5%	3.1%	5.2%	4.8%	8.5%	6.1%
New Mexico											
Population	327,301	360,350	423,317	531,818	681,187	951,023	3,218,706	3,660,777	3,685,296	4,041,769	4,339,367
Percent Change	67.6%	10.1%	17.5%	25.6%	28.1%	39.6%	5.9%	13.7%	0.7%	9.7%	7.4%
New York											
Population	9,113,614	10,385,227	12,588,066	13,479,142	14,830,192	16,782,304	3,641,306	4,205,900	4,219,973	4,468,976	4,533,372
Percent Change	25.4%	14.0%	21.2%	7.1%	10.0%	13.2%	11.8%	15.5%	0.3%	5.9%	1.4%
North Carolina											
Population	2,206,287	2,559,123	3,170,276	3,571,623	4,061,929	4,556,155	992,048	1,124,660	1,227,928	1,274,923	1,328,361
Percent Change	16.5%	16.0%	23.9%	12.7%	13.7%	12.2%	2.4%	13.4%	9.2%	3.8%	4.2%
North Dakota											
Population	577,056	646,872	680,845	641,935	619,636	632,446	3,922,399	4,216,975	4,781,468	5,296,486	5,773,552
Percent Change	80.8%	12.1%	5.3%	-5.7%	-3.5%	2.1%	26.5%	7.5%	13.4%	10.8%	9.0%
Ohio											
Population	4,767,121	5,759,394	6,646,697	6,907,612	7,946,627	9,706,397	5,689,170	5,737,037	6,016,425	6,349,097	6,547,629
Percent Change	14.7%	20.8%	15.4%	3.9%	15.0%	22.1%	10.5%	0.8%	4.9%	5.5%	3.1%
Oklahoma											
Population	1,657,155	2,028,283	2,396,040	2,336,434	2,233,351	2,328,284	2,559,229	3,025,290	3,145,585	3,450,654	3,751,351
Percent Change	109.7%	22.4%	18.1%	-2.5%	-4.4%	4.3%	9.9%	18.2%	4.0%	9.7%	8.7%
Oregon											
Population	672,765	783,389	953,786	1,089,684	1,521,341	1,768,687	2,091,385	2,633,105	2,842,321	3,421,399	3,831,074
Percent Change	62.7%	16.4%	21.8%	14.2%	39.6%	16.3%	18.2%	25.9%	7.9%	20.4%	12.0%

STUDENT HANDOUT

Pennsylvania											
Population	7,665,111	8,720,017	9,631,350	9,900,180	10,498,012	11,319,366	11,793,909	11,863,895	11,881,643	12,281,054	12,702,379
Percent Change	21.6%	13.8%	10.5%	2.8%	6.0%	7.8%	4.2%	0.6%	0.1%	3.4%	3.4%
Rhode Island											
Population	542,610	604,397	687,497	713,346	791,896	859,488	946,725	947,154	1,003,464	1,048,319	1,052,567
Percent Change	26.6%	11.4%	13.7%	3.8%	11.0%	8.5%	10.1%	0.0%	5.9%	4.5%	0.4%
South Carolina											
Population	1,515,400	1,683,724	1,738,765	1,899,804	2,117,027	2,382,594	2,590,516	3,121,820	3,486,703	4,012,012	4,625,364
Percent Change	13.1%	11.1%	3.3%	9.3%	11.4%	12.5%	8.7%	20.5%	11.7%	15.1%	15.3%
South Dakota											
Population	583,888	636,547	692,849	642,961	652,740	680,514	665,507	690,768	696,004	754,844	814,180
Percent Change	45.4%	9.0%	8.8%	-7.2%	1.5%	4.3%	-2.2%	3.8%	0.8%	8.5%	7.9%
Tennessee											
Population	2,184,789	2,337,885	2,616,556	2,915,841	3,291,718	3,567,089	3,923,687	4,591,120	4,877,185	5,689,283	6,346,105
Percent Change	8.1%	7.0%	11.9%	11.4%	12.9%	8.4%	10.0%	17.0%	6.2%	16.7%	11.5%
Texas											
Population	3,896,542	4,663,228	5,824,715	6,414,824	7,711,194	9,579,677	11,196,730	14,229,191	16,986,510	20,851,820	25,145,561
Percent Change	27.8%	19.7%	24.9%	10.1%	20.2%	24.2%	16.9%	27.1%	19.4%	22.8%	20.6%
Utah											
Population	373,351	449,396	507,847	550,310	688,862	890,627	1,059,273	1,461,037	1,722,850	2,233,169	2,763,885
Percent Change	34.9%	20.4%	13.0%	8.4%	25.2%	29.3%	18.9%	37.9%	17.9%	29.6%	23.8%
Vermont											
Population	355,956	352,428	359,611	359,231	377,747	389,881	444,330	511,456	562,758	608,827	625,741
Percent Change	3.6%	-1.0%	2.0%	-0.1%	5.2%	3.2%	14.0%	15.1%	10.0%	8.2%	2.8%
Virginia											
Population	2,061,612	2,309,187	2,421,851	2,677,773	3,318,680	3,966,949	4,648,494	5,346,818	6,187,358	7,078,515	8,001,024
Percent Change	11.2%	12.0%	4.9%	10.6%	23.9%	19.5%	17.2%	15.0%	15.7%	14.4%	13.0%
Washington											
Population	1,141,990	1,356,621	1,563,396	1,736,191	2,378,963	2,853,214	3,409,169	4,132,156	4,866,692	5,894,121	6,724,540
Percent Change	120.4%	18.8%	15.2%	11.1%	37.0%	19.9%	19.5%	21.2%	17.8%	21.1%	14.1%
West Virginia											
Population	1,221,119	1,463,701	1,729,205	1,901,974	2,005,552	1,860,421	1,744,237	1,949,644	1,793,477	1,808,344	1,852,994
Percent Change	27.4%	19.9%	18.1%	10.0%	5.4%	-7.2%	-6.2%	11.8%	-8.0%	0.8%	2.5%
Wisconsin											
Population	2,333,860	2,632,067	2,939,006	3,137,587	3,434,575	3,951,777	4,417,731	4,705,767	4,891,769	5,363,675	5,686,986
Percent Change	12.8%	12.8%	11.7%	6.8%	9.5%	15.1%	11.8%	6.5%	4.0%	9.6%	6.0%
Wyoming											
Population	145,965	194,402	225,565	250,742	290,529	330,066	332,416	469,557	453,588	493,782	563,626
Percent Change	57.7%	33.2%	16.0%	11.2%	15.9%	13.6%	0.7%	41.3%	-3.4%	8.9%	14.1%
Puerto Rico											
Population	1,118,012	1,299,809	1,543,913	1,869,255	2,210,703	2,349,544	2,712,033	3,196,520	3,522,037	3,808,610	3,725,789
Percent Change	17.3%	16.3%	18.8%	21.1%	18.3%	6.3%	15.4%	17.9%	10.2%	8.1%	-2.2%

Source: US Census Bureau, [2010 Census: Population Change Data \(Text Version\)](#)

UNITED STATES POPULATION DEMOGRAPHICS

UNDERSTANDING THE US POPULATION

Activity Idea #1 (beginner)

Students will break up into small groups and use the map of the changing US population to select one category/graphic for exploration. After researching their category, students will discuss how the data reflects the changing population of the United States and make a claim. It is important that the students identify the exact evidence that supports the claim that was made.

Note to Teacher: It may be helpful to provide sample claims to students or to compose a sample claim as a group.

Activity Idea #2 (intermediate)

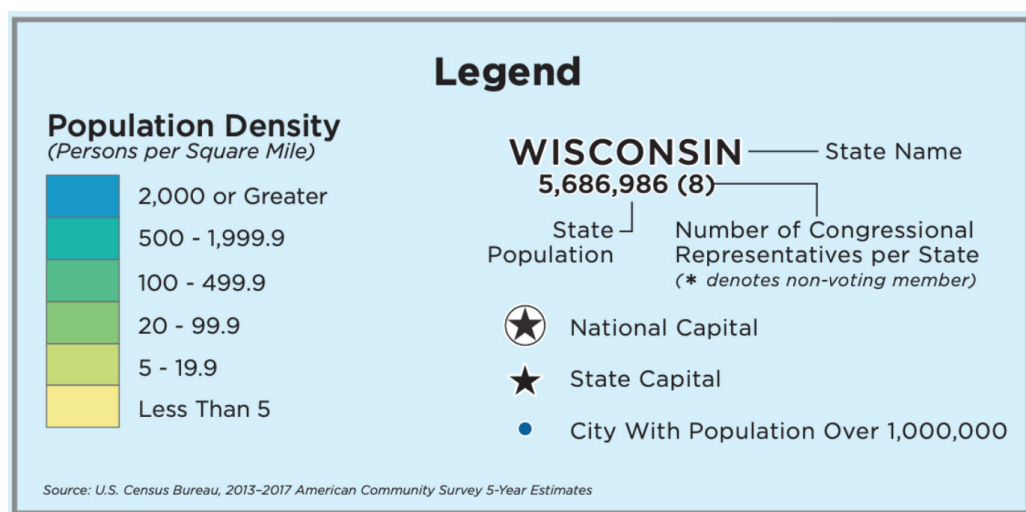
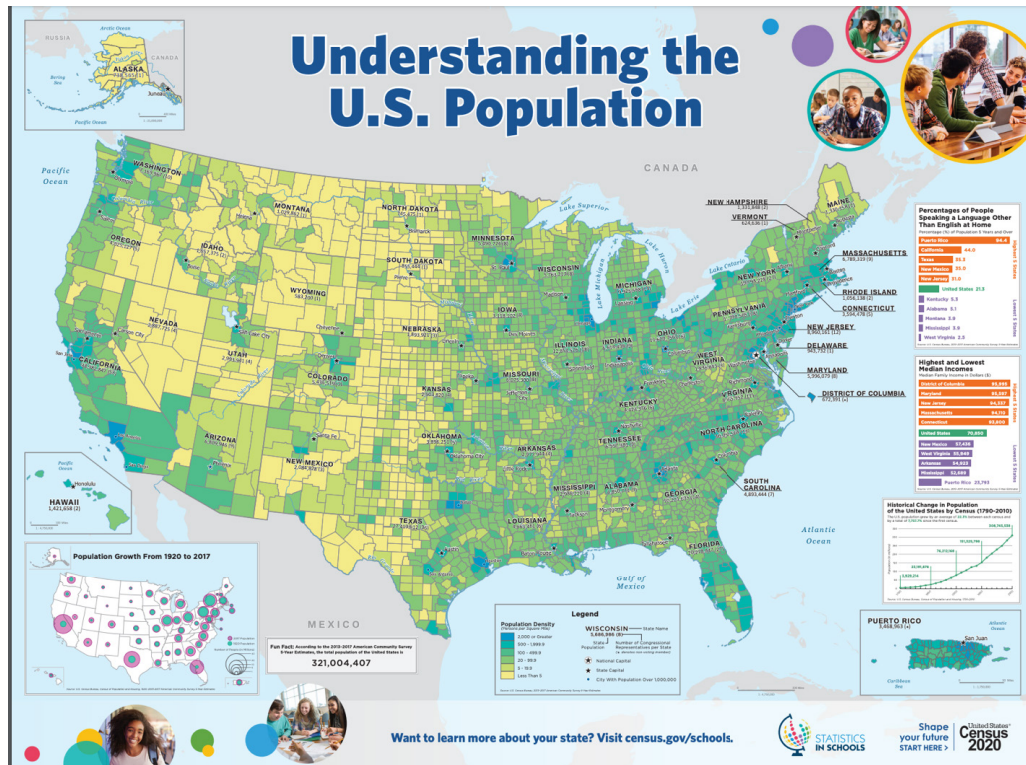
Students will select one state to research changing demographic patterns, such as language, population change, and median income. After researching data for their state, students will create a visual display/ representation, such as an infographic, to share their information. Encourage students to convey the data and information in an effective and visually appealing format, as well as to display a synthesized understanding of the demographic patterns.

Connect to: [Evaluating Sources](#), [Citing Textual Evidence](#), [Using Data to Draw Inferences](#)

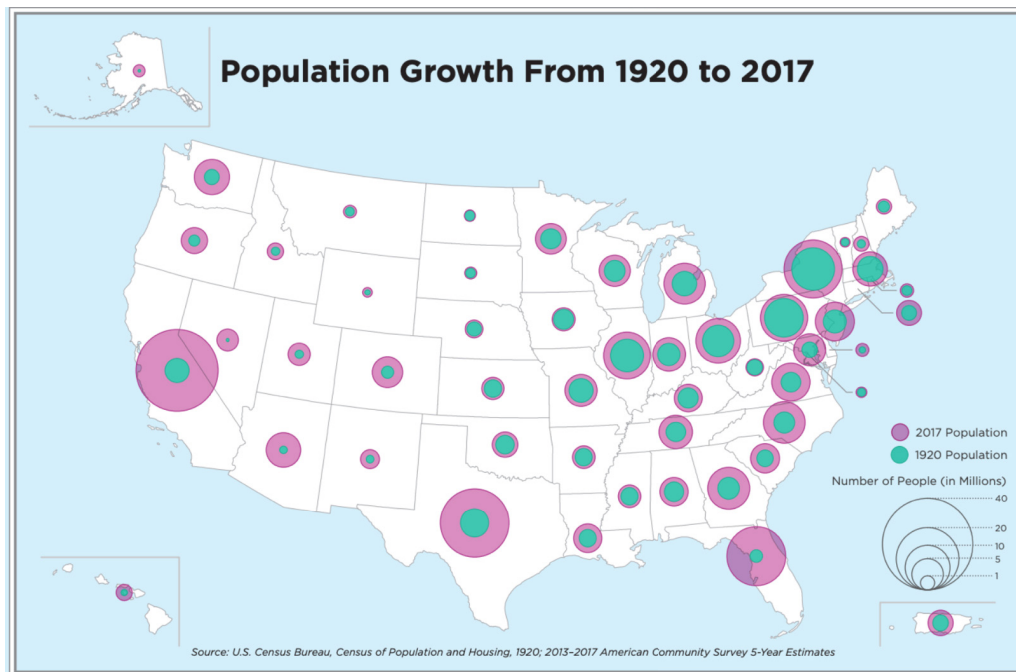
Visual/Graphic: US Census Bureau, [Understanding the US Population](#), Charts and graphs are provided below for settings without Internet access.

STUDENT HANDOUT

MICRO MAPS FROM THE INFOGRAPHIC



STUDENT HANDOUT



Highest and Lowest Median Incomes

Median Family Income in Dollars (\$)

District of Columbia	95,995	Highest 5 States
Maryland	95,597	
New Jersey	94,337	
Massachusetts	94,110	
Connecticut	93,800	
United States	70,850	
New Mexico	57,436	Lowest 5 States
West Virginia	55,949	
Arkansas	54,923	
Mississippi	52,689	
Puerto Rico	23,793	

Source: U.S. Census Bureau, 2013-2017 American Community Survey 5-Year Estimates

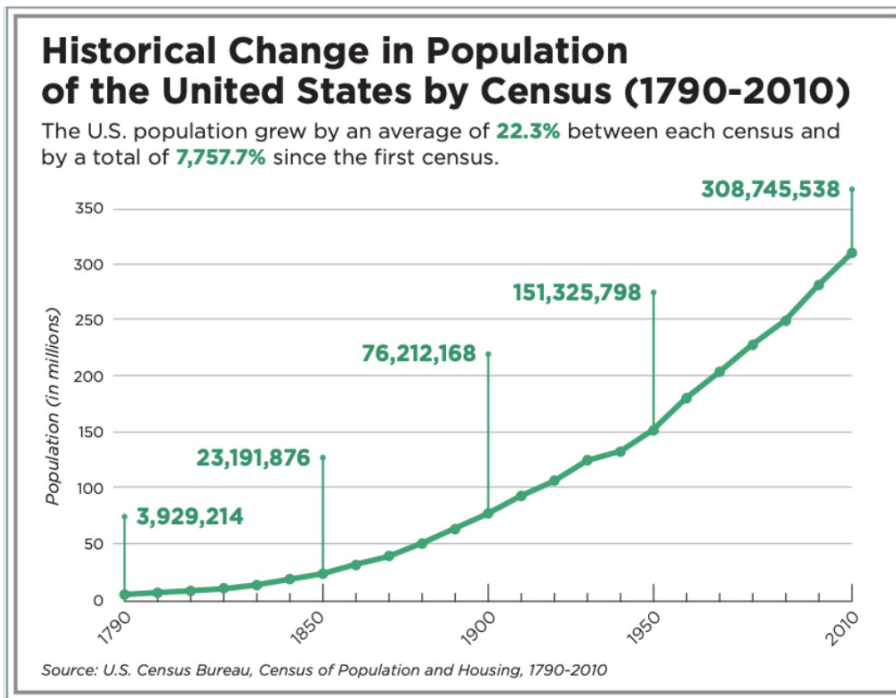
Percentages of People Speaking a Language Other Than English at Home

Percentage (%) of Population 5 Years and Over

Puerto Rico	94.4	Highest 5 States
California	44.0	
Texas	35.3	
New Mexico	35.0	
New Jersey	31.0	
United States	21.3	
Kentucky	5.3	Lowest 5 States
Alabama	5.1	
Montana	3.9	
Mississippi	3.9	
West Virginia	2.5	

Source: U.S. Census Bureau, 2013-2017 American Community Survey 5-Year Estimates

STUDENT HANDOUT



Source: US Census Bureau, [Understanding the US Population](#)

VOTING PATTERNS ACROSS THE STATES

VOTING RATES IN PRESIDENTIAL ELECTIONS (TABLE A-5)

Activity Idea #1 (beginner)

Using the data set that outlines voting rates by state in presidential elections, students will analyze the data of five states of their choice and create a graph that highlights the change in voter participation within each state from the last three election years. Students will select the type of graph that they would like to use to represent this data. After analyzing the data, the students will create 3–5 observations that are seen in the data.

Note to Teacher: It may be helpful to demonstrate sample data observations with students or compose one together as a group.

Activity Idea #2 (intermediate)

Using the same data chart, students will create a visual graphic that represents changes in voting patterns across all 50 states. After creating the visuals, students will then work together to discuss trends they see in voting rates by year, region, and state. To assist the students with drawing these conclusions, encourage them to create a graphic organizer comparing and contrasting the voting rate data from various regions and states over the past few years. Upon completion of the conclusions, lead a collaborative group conversation about what they observed about the data. The students could also be prompted to draw inferences about why they believe registration and voting numbers changed in specific states or regions.

Connect to: [Calculate Averages](#), [Mathematical Representation](#), [Making Claims Using Evidence](#)

Visual/Graphic: [Historical Reported Voting Rates](#) (Table A-5a), Charts and graphs are provided below for settings without Internet access.

STUDENT HANDOUT

VOTING RATES IN PRESIDENTIAL ELECTIONS

State	Voting Rates									
	2016		2012		2008		2004		2000	
	Total	Citizen	Total	Citizen	Total	Citizen	Total	Citizen	Total	Citizen
Alabama	56.4	57.4	59.9	61.9	60.8	62.4	61.8	63.2	59.6	60.4
Alaska	59.4	61.3	56.0	58.4	62.4	65.0	65.0	67.6	65.5	67.7
Arizona	53.3	60.4	49.6	55.9	53.3	59.9	54.3	63.8	46.7	52.5
Arkansas	56.0	58.7	51.1	53.3	51.8	53.8	56.7	58.7	49.4	50.6
California	48.2	57.9	47.5	57.4	57.5	63.4	49.1	61.9	48.4	52.8
Colorado	63.8	69.5	65.4	70.4	62.5	68.4	61.7	67.5	53.6	57.2
Connecticut	57.5	63.9	57.5	62.7	60.8	67.2	58.5	63.2	55.2	59.5
Delaware	57.2	62.3	62.2	67.3	63.0	67.3	62.8	66.4	62.2	64.8
District of Columbia	88.7	74.3	67.7	75.9	65.3	74.1	62.0	69.2	65.6	71.7
Florida	52.9	59.5	53.9	60.8	56.5	63.8	56.1	64.3	51.6	59.6
Georgia	55.7	60.2	58.1	61.9	59.6	64.2	52.6	56.8	49.0	50.9
Hawaii	43.3	47.3	47.4	51.6	46.8	51.8	46.2	50.8	39.7	44.1
Idaho	58.3	62.1	60.2	63.9	58.8	61.4	58.7	61.6	53.9	56.1
Illinois	58.8	63.8	56.2	61.5	57.1	62.6	61.0	65.6	56.8	62.0
Indiana	56.0	58.3	57.7	59.3	58.8	60.5	57.3	58.6	58.5	59.6
Iowa	60.7	63.4	66.7	69.4	66.9	70.2	68.8	71.3	64.1	67.4
Kansas	56.0	61.3	58.9	63.3	59.8	63.1	59.7	64.2	60.2	61.7
Kentucky	55.3	57.0	57.6	59.3	61.4	63.1	63.4	65.0	54.9	56.4
Louisiana	59.7	61.6	64.7	66.3	68.0	70.3	63.1	64.2	64.6	65.7
Maine	71.3	72.7	67.2	68.6	70.2	71.2	72.0	73.1	69.2	70.1
Maryland	59.2	65.8	58.7	65.1	61.9	68.3	59.7	65.6	57.1	61.1
Massachusetts	61.7	66.7	65.4	70.8	61.3	67.1	63.7	68.6	60.1	65.3
Michigan	61.8	64.3	64.5	66.8	65.0	67.8	64.7	67.1	60.1	62.4
Minnesota	65.3	68.7	70.5	73.2	70.8	75.0	76.7	79.2	67.8	69.8
Mississippi	66.7	67.7	73.3	74.5	68.2	69.7	60.7	61.7	59.8	60.6
Missouri	62.8	64.8	62.3	63.9	64.2	65.8	66.3	68.5	65.4	66.7
Montana	65.2	65.9	64.5	65.7	64.7	65.4	69.9	70.2	62.2	62.9
Nebraska	63.4	66.8	58.2	61.6	64.5	67.3	61.3	65.3	58.9	60.3
Nevada	53.5	60.5	51.4	57.9	52.8	59.9	51.3	58.9	46.5	52.1
New Hampshire	66.9	69.0	66.9	69.4	69.8	71.2	68.6	71.5	63.3	66.6
New Jersey	53.4	61.5	54.5	61.9	56.0	64.1	57.6	66.0	55.2	61.8
New Mexico	49.4	54.8	56.5	61.6	57.4	62.6	60.9	64.4	51.3	54.4
New York	50.7	57.2	50.9	58.7	51.5	58.8	53.1	60.2	51.0	59.0
North Carolina	61.6	67.5	63.7	68.9	63.8	67.5	58.2	61.4	53.2	56.1
North Dakota	62.1	64.2	62.2	63.9	66.3	67.5	70.8	71.5	69.8	70.4
Ohio	61.4	63.6	61.7	63.1	64.5	65.5	64.8	66.1	58.1	59.2
Oklahoma	53.2	56.6	51.0	52.4	56.5	58.7	59.2	62.3	58.3	59.6
Oregon	61.0	66.3	63.3	67.6	62.6	67.6	70.6	74.0	60.8	67.5
Pennsylvania	60.2	62.6	59.1	61.6	60.8	62.4	62.5	64.5	55.7	57.4
Rhode Island	55.5	60.6	57.4	62.5	63.0	67.4	57.4	63.7	60.1	63.5
South Carolina	59.8	62.1	62.2	64.7	63.4	65.6	62.0	63.2	58.9	59.5
South Dakota	57.3	59.1	60.1	61.0	66.1	67.8	67.1	68.3	58.7	59.2
Tennessee	52.0	54.0	53.7	55.7	53.6	55.5	52.7	54.6	52.3	53.7
Texas	47.7	55.4	46.4	53.8	48.8	56.1	50.3	57.1	48.2	54.1
Utah	58.9	62.7	53.3	57.0	50.5	53.1	62.8	67.8	56.3	60.2
Vermont	61.0	62.5	62.1	63.3	63.2	64.7	65.4	67.3	63.3	64.2
Virginia	62.6	68.2	62.0	66.9	63.8	68.7	58.4	63.1	57.2	60.3
Washington	60.5	66.3	60.7	65.6	62.6	66.8	62.0	67.6	58.6	62.0
West Virginia	50.4	50.8	47.5	47.5	53.4	53.4	52.2	57.2	52.1	52.4
Wisconsin	68.7	70.5	71.9	73.6	68.5	71.2	73.0	76.6	67.8	70.1
Wyoming	63.5	64.8	57.8	58.9	62.9	64.3	66.3	66.9	62.5	62.9

Note: Data for 1976 show the 25 largest states and data for 1972 show the largest 15 states. Data are limited to the largest states in 1976 and 1972 due to smaller sample sizes.

Note: Data are not available prior to 1972.

Prior to 1996, the CPS did not collect information on citizenship in a uniform way. Estimates for the citizenship population presented in this table prior to 1996 should be interpreted with caution, as they are not directly comparable to estimates from 1996 and after.

Source: U.S. Census Bureau, Current Population Report, November 2016 and earlier years.

STUDENT HANDOUT

Table A-5. Reported Voting and Registration for Total and Citizen Voting-Age Population, by State for Presidential Elections: 1972-2016 (Continued)
(Percent)

State	Voting Rates							
	1988		1984		1980		1976	1972
	Total	Citizen	Total	Citizen	Total	Citizen	Total	Total
Alabama	56.9	57.6	60.8	62.3	56.4	57.3	54.6	NA
Alaska	59.4	63.9	59.1	63.4	56.8	62.7	NA	NA
Arizona	54.0	57.8	54.0	58.1	53.5	57.8	NA	NA
Arkansas	55.8	57.2	60.4	61.2	57.2	58.6	NA	NA
California	51.7	64.8	55.7	68.0	53.8	64.9	54.8	66.0
Colorado	65.4	69.2	60.5	64.4	63.4	67.0	NA	NA
Connecticut	63.9	69.2	64.2	68.6	67.6	72.9	64.4	NA
Delaware	58.7	61.4	59.0	64.9	60.4	62.9	NA	NA
District of Columbia	52.7	57.9	54.0	63.2	48.9	53.5	NA	NA
Florida	54.5	60.8	53.3	59.2	55.5	61.2	54.7	59.0
Georgia	49.6	51.7	52.4	55.7	53.5	55.0	54.1	49.2
Hawaii	54.8	60.3	54.5	61.5	55.9	63.5	NA	NA
Idaho	63.9	67.1	67.5	71.2	70.1	74.9	NA	NA
Illinois	60.7	65.8	66.9	73.6	66.4	72.0	65.6	71.1
Indiana	60.4	62.6	62.4	64.1	61.6	63.9	64.8	68.9
Iowa	63.6	64.9	68.6	70.1	67.7	69.9	67.6	NA
Kansas	60.6	62.8	63.3	66.2	63.6	65.8	NA	NA
Kentucky	49.7	50.9	59.0	60.6	56.9	58.3	55.6	NA
Louisiana	65.2	67.2	64.9	68.3	63.9	66.1	59.9	NA
Maine	66.7	68.5	68.7	71.9	68.2	71.8	NA	NA
Maryland	54.8	59.7	60.0	64.7	58.6	62.6	58.7	NA
Massachusetts	63.6	68.3	60.9	67.3	65.6	71.4	68.9	68.7
Michigan	59.5	64.8	62.3	66.6	64.1	69.5	64.0	65.1
Minnesota	69.7	74.4	75.6	78.0	73.3	76.3	75.4	NA
Mississippi	62.7	64.1	69.3	70.2	67.3	68.5	NA	NA
Missouri	64.5	66.2	65.5	67.7	67.3	70.0	63.1	65.4
Montana	68.6	69.7	70.8	74.0	67.6	71.0	NA	NA
Nebraska	63.5	65.7	62.7	65.4	63.3	66.1	NA	NA
Nevada	46.9	50.7	46.1	51.7	49.3	54.8	NA	NA
New Hampshire	58.1	59.8	59.7	61.7	68.2	70.5	NA	NA
New Jersey	59.5	65.1	60.9	67.1	59.6	65.7	59.1	66.7
New Mexico	54.6	59.3	61.7	64.8	58.8	61.9	NA	NA
New York	54.0	61.9	57.8	65.9	54.8	62.5	56.4	63.5
North Carolina	52.9	54.9	56.5	57.9	52.2	54.3	48.7	49.0
North Dakota	73.2	74.6	71.0	72.9	71.9	74.1	NA	NA
Ohio	62.1	64.3	62.3	64.7	60.7	63.8	59.5	65.6
Oklahoma	55.6	57.5	59.7	62.6	59.4	62.9	NA	NA
Oregon	63.8	66.1	67.0	71.1	65.9	71.9	NA	NA
Pennsylvania	54.8	56.9	58.6	61.5	54.9	57.9	57.3	61.0
Rhode Island	60.8	68.2	62.7	69.5	64.7	71.1	NA	NA
South Carolina	49.2	50.5	48.6	50.4	51.4	52.6	NA	NA
South Dakota	72.0	73.3	68.4	70.1	74.5	77.0	NA	NA
Tennessee	51.4	52.4	58.0	59.3	56.7	58.2	55.2	NA
Texas	53.9	59.2	54.4	59.4	51.1	55.9	53.2	55.0
Utah	69.8	72.9	71.3	74.1	72.2	74.5	NA	NA
Vermont	64.0	66.3	61.1	64.5	61.3	63.9	NA	NA
Virginia	58.0	60.5	56.6	59.7	55.2	57.6	55.2	49.3
Washington	61.9	64.6	64.5	69.5	61.2	68.0	64.4	NA
West Virginia	52.7	53.8	59.1	60.5	58.4	59.9	NA	NA
Wisconsin	70.2	71.3	71.5	73.6	74.5	77.3	72.4	NA
Wyoming	61.7	63.8	66.3	68.8	59.4	62.1	NA	NA

Note: Data for 1976 show the 25 largest states and data for 1972 show the largest 15 states. Data are limited to the largest states in 1976 and 1972.

Note: Data are not available prior to 1972.

Prior to 1996, the CPS did not collect information on citizenship in a uniform way. Estimates for the citizenship population presented here are interpreted with caution, as they are not directly comparable to estimates from 1996 and after.

Source: U.S. Census Bureau, Current Population Report, November 2016 and earlier years.

Nielsen: US Census Bureau, [Historical Reported Voting Rates](#) (Table A-5a)

COLLECTING DATA—IN ORDER TO SOLVE A PROBLEM, YOU NEED TO FIND THE RIGHT INFORMATION

To collect their own data, students will research voting participation in their own county. Students will collect data on various categories, such as voting participation rates compared to population size. After collecting data, students will analyze trends and work collaboratively to create an awareness campaign to increase voter participation.

KEY VOCABULARY

Campaign: A planned set of actions or events that are meant to achieve a particular result, often related to politics or social circumstances

Census: An official count or survey of a population

Citizen: A person who is entitled to the rights and privileges of a particular geographic location (examples: city, state, country)

Comparison: The act of finding similarities and/or differences between two or more things or ideas

Contrasting: Identifying differences between two or more things

Demographic: Statistical data related to human populations (such as age or income)

Density: The quantity of people or things in a given area or space

Diversity: The variety of differences within a group of people, such as race, religion, socioeconomic status, etc.

Evidence: Information that provides support for whether a conclusion is true

Hypothesis: A predicted explanation for something

Proportion: Two amounts that have a constant ratio to one another; a part or share of something, compared to a whole

Rate: A comparison of two amounts with different units of measure (example: miles per hour)

Rate of Change: The relationship between how one amount changes in relation to another amount (change in y divided by the change in x)